

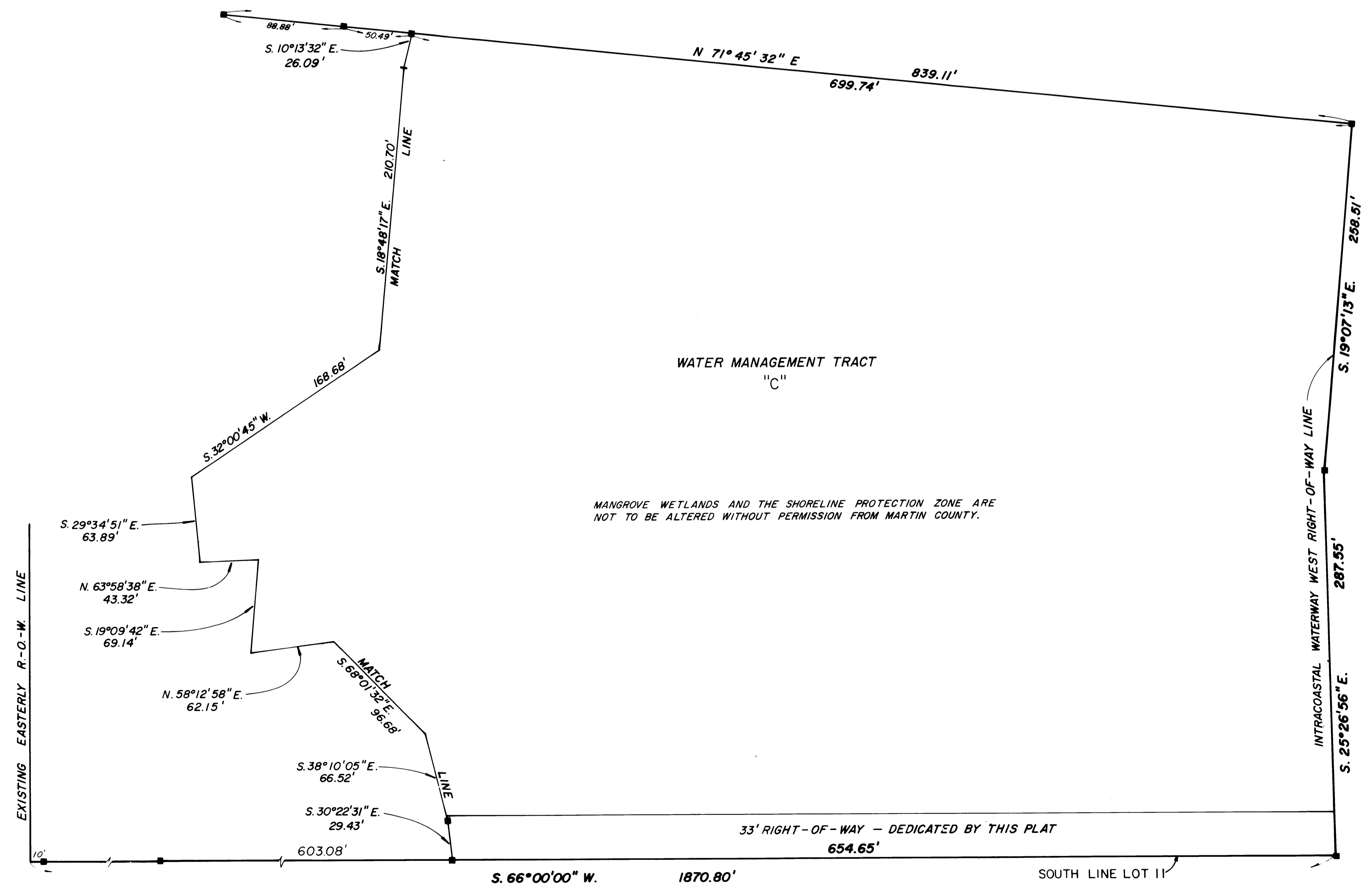
A PLAT OF JUPITER NARROWS

PHASE A
GOMEZ GRANT
MARTIN COUNTY, FLORIDA

SEPTEMBER, 1984

I, Louise V. Isaacs, Clerk of the Circuit Court of Martin County, Florida, hereby certify that this Plat was filed for record in Plat Book 9, Page 81, Martin County, Florida, Public Records, this _____ day of _____ 1984.
Louise V. Isaacs, Clerk of the Circuit Court Martin County, Florida
By: _____ Deputy Clerk
File No. _____
(Circuit Court Seal)

UNPLATTED



MANGROVE WETLANDS AND THE SHORELINE PROTECTION ZONE ARE NOT TO BE ALTERED WITHOUT PERMISSION FROM MARTIN COUNTY.

BEARING BASE
THE EASTERLY RIGHT-OF-WAY LINE OF FIRST AVENUE IS TAKEN TO BE N 24°00'00" W, AND ALL OTHER BEARINGS ARE RELATIVE THERETO.

- LEGEND**
- - DENOTES PERMANENT REFERENCE MONUMENT
 - - DENOTES PERMANENT CONTROL POINT
 - M.E. - MAINTENANCE EASEMENT
 - D.E. - DRAINAGE EASEMENT
 - L.A.E. - LIMITED ACCESS EASEMENT
 - U.E. - UTILITY EASEMENT
 - ▨ - STORMWATER CONVEYANCE EASEMENT

HARBOUR AT HOBE SOUND
P.B. 5, PG. 24
MARTIN COUNTY, FLORIDA

LINDAHL, BROWNING, FERRARI & HELLSTROM, INC.
Consulting Engineers, Planners & Surveyors
JUPITER, FLORIDA STUART, FLORIDA
FORT PIERCE, FLORIDA